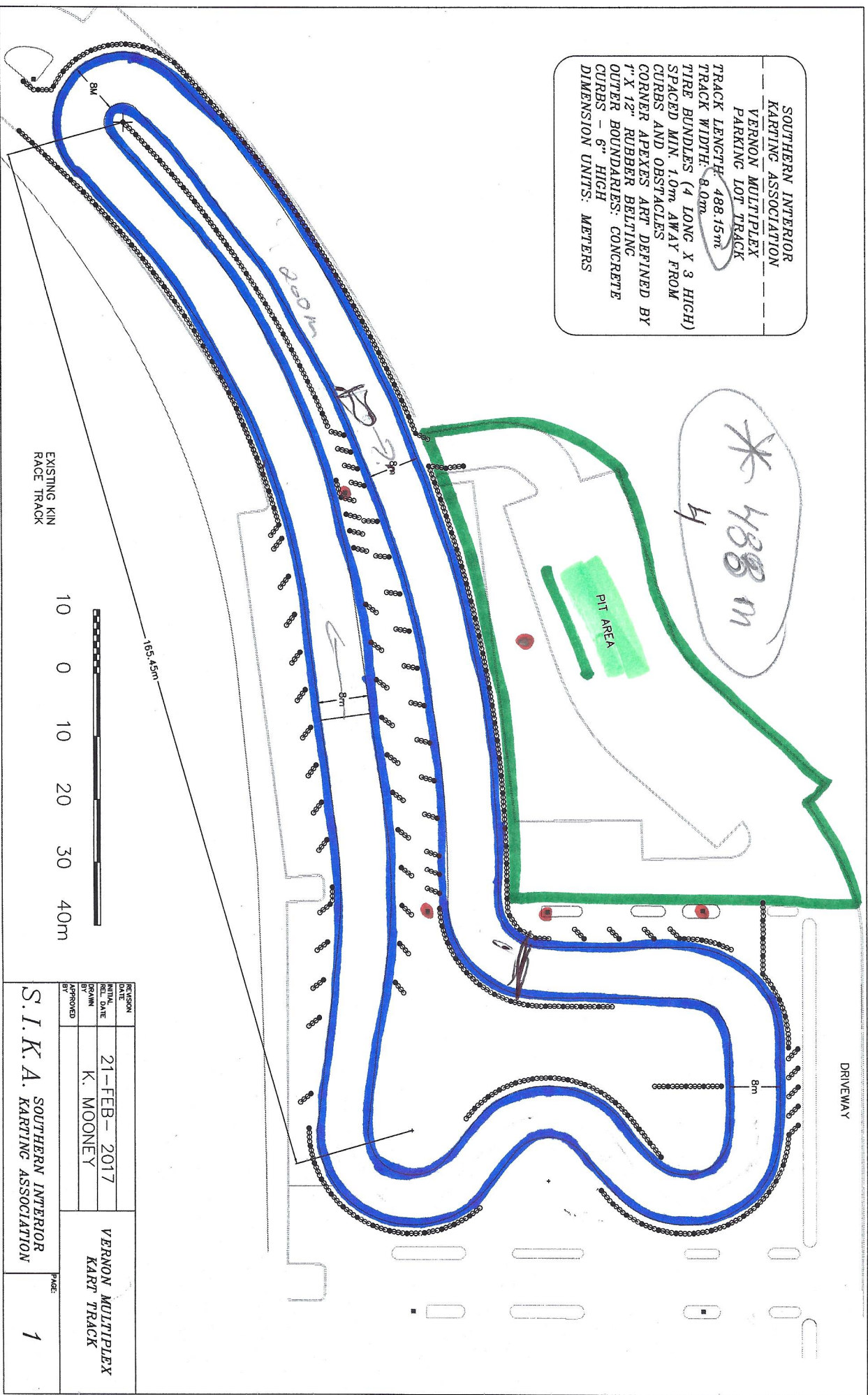
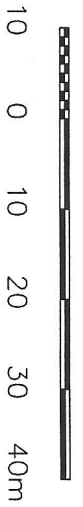


SOUTHERN INTERIOR  
 KARTING ASSOCIATION  
 VERNON MULTIPLEX  
 PARKING LOT TRACK  
 TRACK LENGTH: 488.15m  
 TRACK WIDTH: 8.0m  
 TIRE BUNDLES (4 LONG X 3 HIGH)  
 SPACED MIN. 1.0m AWAY FROM  
 CURBS AND OBSTACLES  
 CORNER APEXES ART. DEFINED BY  
 1" X 12" RUBBER BELTING  
 OUTER BOUNDARIES: CONCRETE  
 CURBS - 6" HIGH  
 DIMENSION UNITS: METERS



EXISTING KIN  
 RACE TRACK



REVISION		
DATE	21-FEB-2017	VERNON MULTIPLEX
REL. DATE		KART TRACK
BY	K. MOONEY	
APPROVED BY		
S. I. K. A. SOUTHERN INTERIOR KARTING ASSOCIATION		PAGE
		1

*CURRENT LAYOUT*

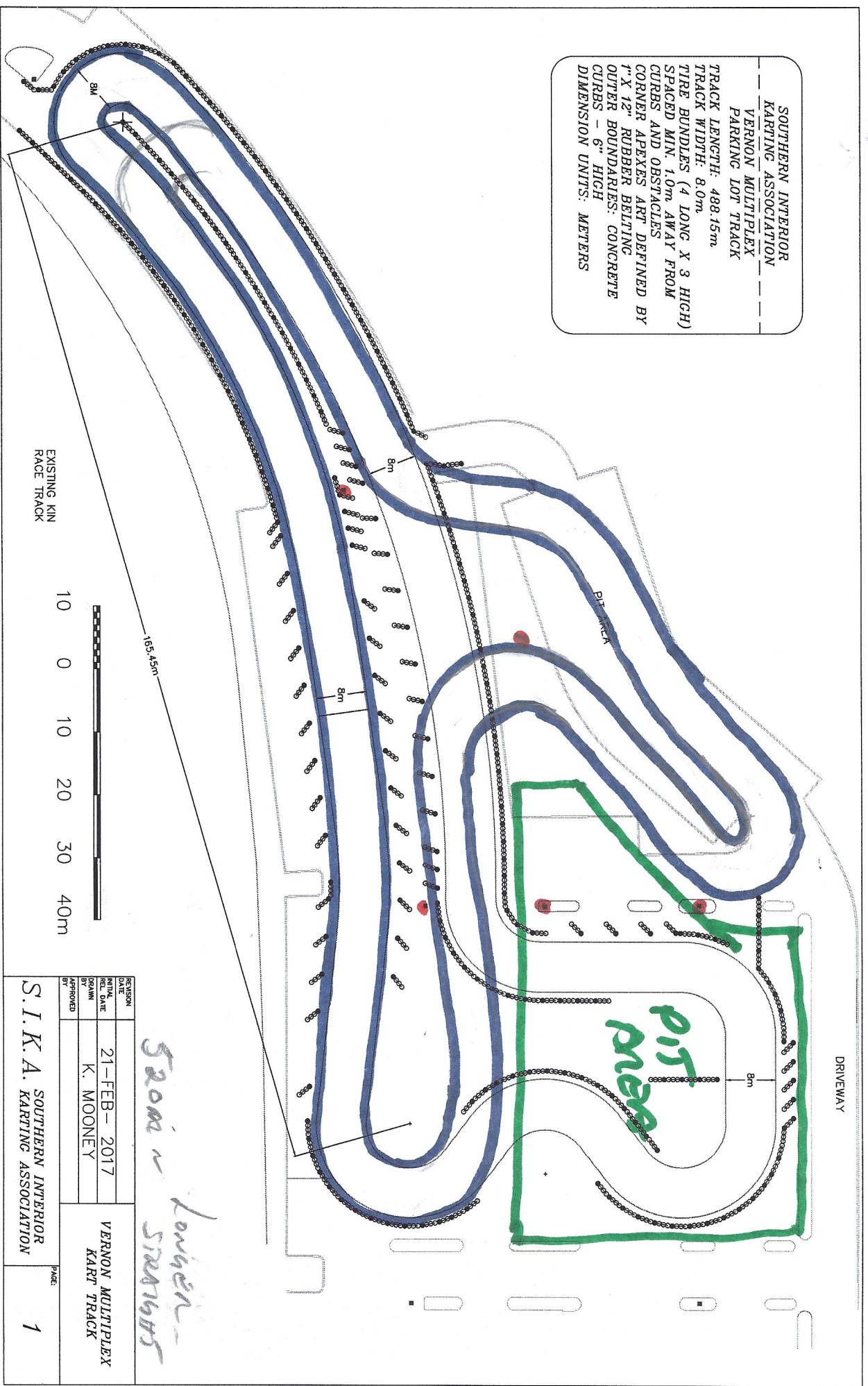
*PIT Area 2000 m<sup>2</sup>*

*6 TURNS*

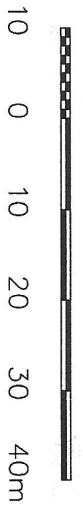
*ROAD*

SOUTHERN INTERIOR  
 KARTING ASSOCIATION  
 VERNON MULTIPLEX  
 PARKING LOT TRACK

TRACK LENGTH: 488.15m  
 TRACK WIDTH: 8.0m  
 TIRE BUNDLES (4 LONG X 3 HIGH)  
 SPACED MIN. 1.0m AWAY FROM  
 CURBS AND OBSTACLES  
 CORNER APICES ART DEFINED BY  
 1" X 12" RUBBER BELTING  
 OUTER BOUNDARIES: CONCRETE  
 CURBS - 6" HIGH  
 DIMENSION UNITS: METERS



EXISTING KIN  
 RACE TRACK



REVISION		
DATE	21-FEB-2017	VERNON MULTIPLEX
BY	K. MOONEY	KART TRACK
APPROVED BY		
S. I. K. A. SOUTHERN INTERIOR KARTING ASSOCIATION		PAGE 1

5200m ~ longer straight

PLAN # 1

6 TURNS

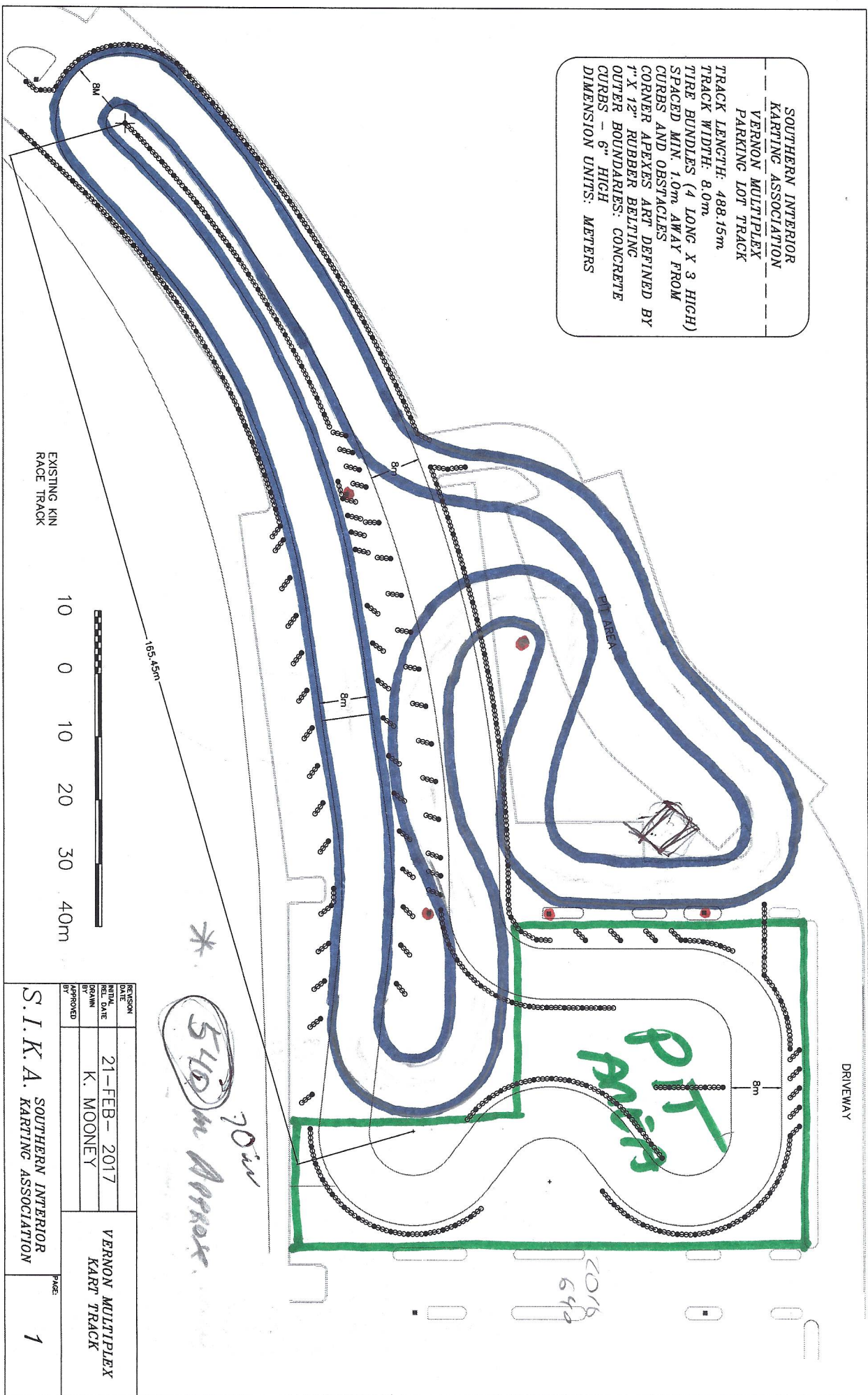
PIT AREA 2200m?

NOTES: STRAIGHT AWAY

SPACE 850x1000m ON LEVEL

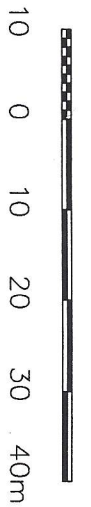
6

SOUTHERN INTERIOR  
 KARTING ASSOCIATION  
 VERNON MULTIPLEX  
 PARKING LOT TRACK  
 TRACK LENGTH: 488.15m  
 TIRE BUNDLES (4 LONG X 3 HIGH)  
 TRACK WIDTH: 8.0m  
 SPACED MIN. 10m AWAY FROM  
 CURBS AND OBSTACLES  
 CORNER APEXES ARE DEFINED BY  
 1" X 12" RUBBER BELTING  
 OUTER BOUNDARIES: CONCRETE  
 CURBS - 6" HIGH  
 DIMENSION UNITS: METERS



PLAN #2

EXISTING KIN  
 RACE TRACK



105.45m

\*  
 540m Approx  
 70m

REVISION DATE	INITIALS	DATE	BY	APPROVED
		21-FEB-2017	K. MOONEY	
S. I. K. A. SOUTHERN INTERIOR KARTING ASSOCIATION				PAGE: 1

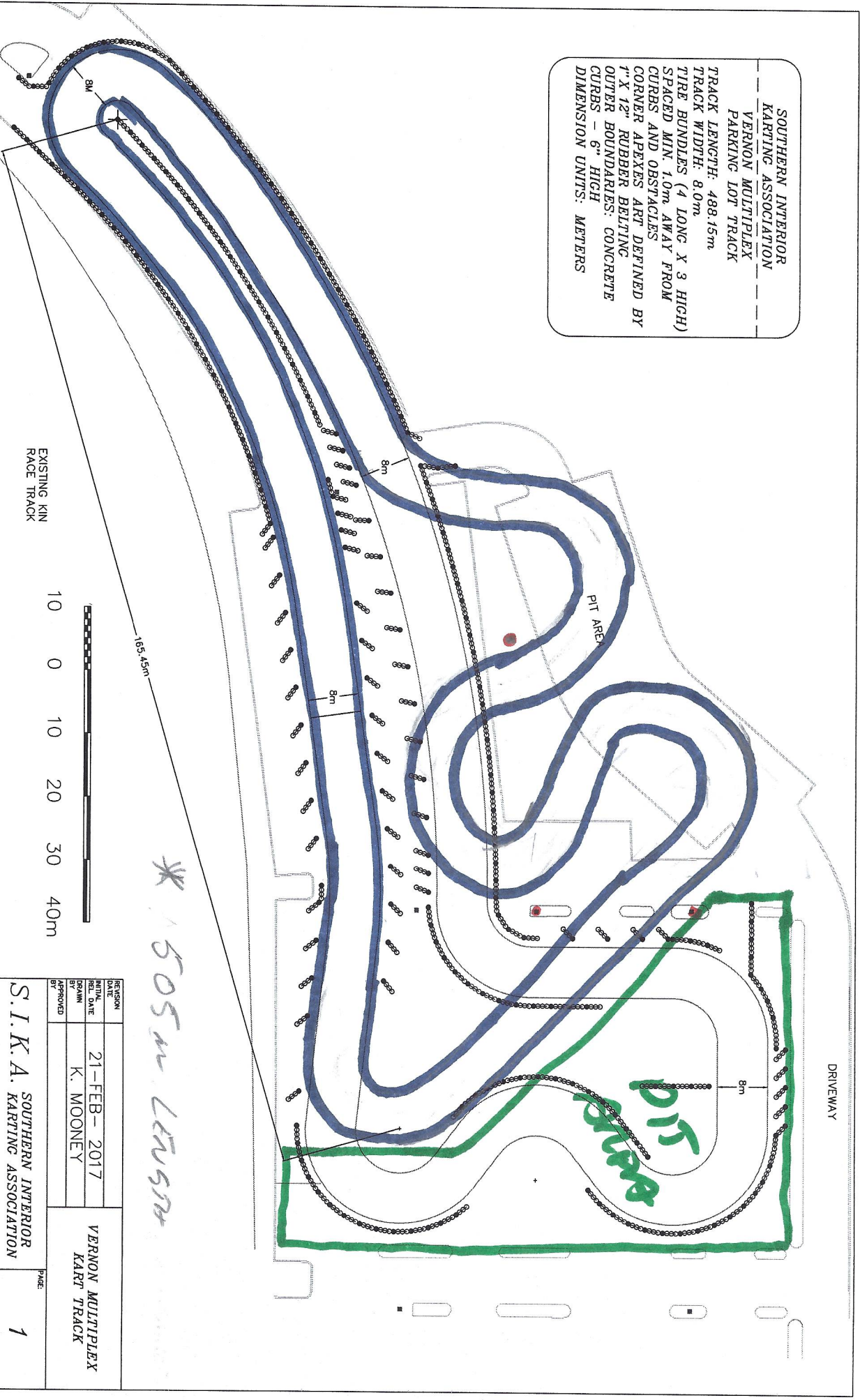
S. I. K. A. SOUTHERN INTERIOR KARTING ASSOCIATION

7 TURNS  
 PIT AREA 2650m<sup>2</sup>  
 STRAIGHT  
 SAME LENGTH AS  
 EXISTING

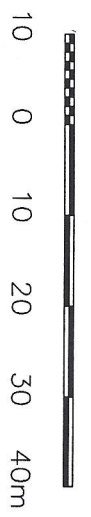
2018  
 642

SOUTHERN INTERIOR  
 KARTING ASSOCIATION  
 VERNON MULTIPLEX  
 PARKING LOT TRACK

TRACK LENGTH: 488.15m  
 TRACK WIDTH: 8.0m  
 TIRE BUNDLES (4 LONG X 3 HIGH)  
 SPACED MIN. 1.0m AWAY FROM  
 CURBS AND OBSTACLES  
 CORNER APERTURES ART DEFINED BY  
 1" X 12" RUBBER BELTING  
 OUTER BOUNDARIES: CONCRETE  
 CURBS - 6" HIGH  
 DIMENSION UNITS: METERS



EXISTING KIN  
 RACE TRACK



\* 505m LENGTH

REVISION	DATE	INITIALS	REL. DATE	VERNON MULTIPLEX KART TRACK
BY	APPROVED			
S. I. K. A. SOUTHERN INTERIOR KARTING ASSOCIATION				PAGE: 1

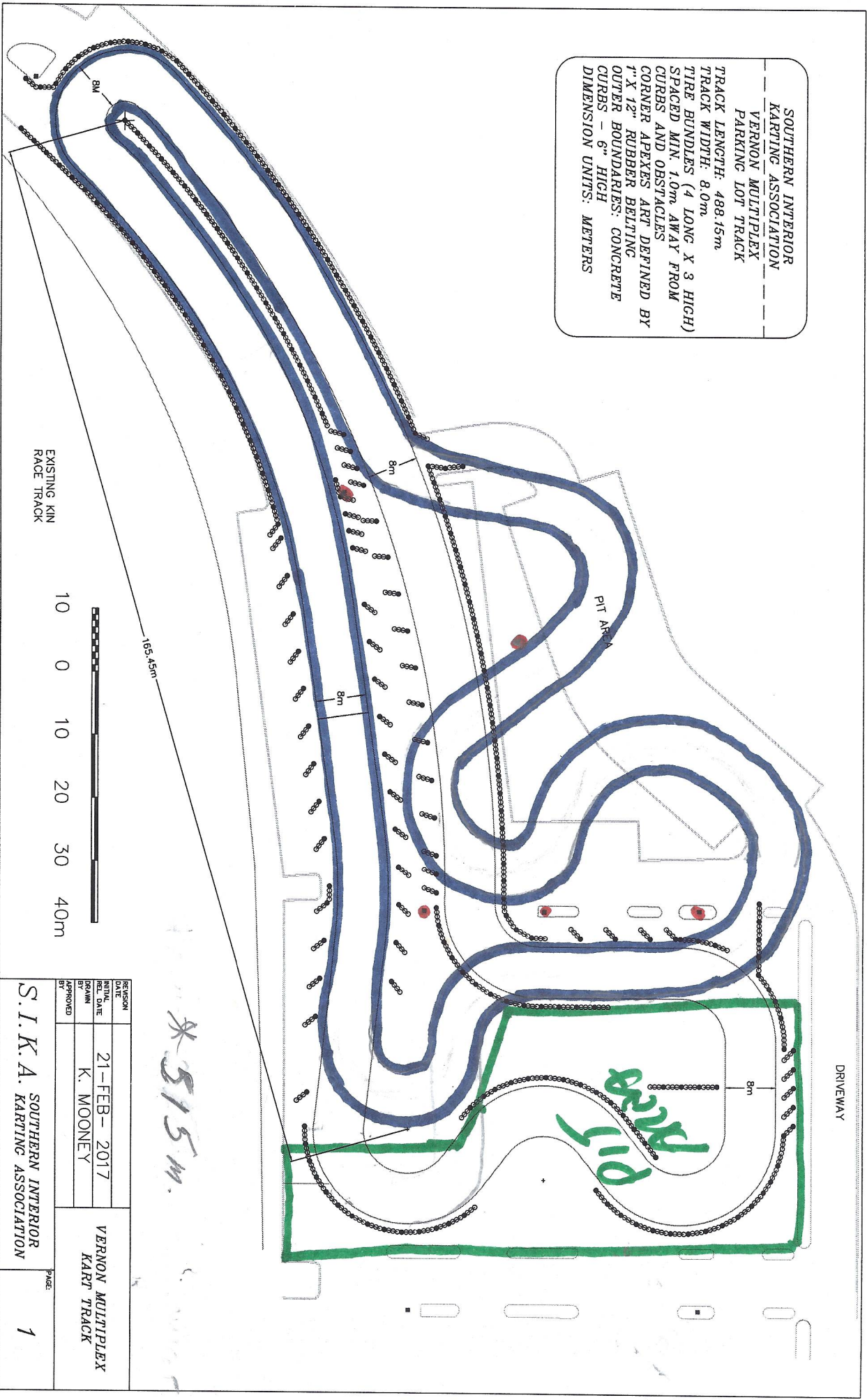
PLAN #3

6 TURNS

PIT AREA 2800 m<sup>2</sup>

SOUTHERN INTERIOR  
 KARTING ASSOCIATION  
 VERNON MULTIPLEX  
 PARKING LOT TRACK

TRACK LENGTH: 488.15m  
 TRACK WIDTH: 8.0m  
 TIRE BUNDLES (4 LONG X 3 HIGH)  
 SPACED MIN. 1.0m AWAY FROM  
 CURBS AND OBSTACLES  
 CORNER APERTURES ART DEFINED BY  
 1" X 12" RUBBER BELTING  
 OUTER BOUNDARIES: CONCRETE  
 CURBS - 6" HIGH  
 DIMENSION UNITS: METERS



PLAN #4

7 TURNS  
 2100m<sup>2</sup> PIT AREA

NOTE: STRAIGHTS SAME  
 LENGTH AS EXISTING

REVISION DATE	21-FEB-2017	VERNON MULTIPLEX KART TRACK
INITIALS	K. MOONEY	
APPROVED BY		
S.I.K.A. SOUTHERN INTERIOR KARTING ASSOCIATION		PAGE: 1

\* 515m